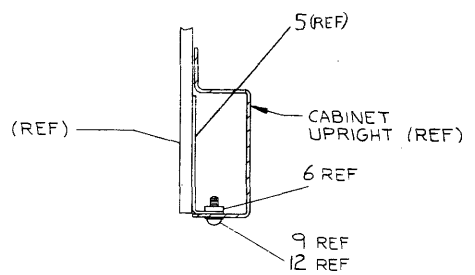
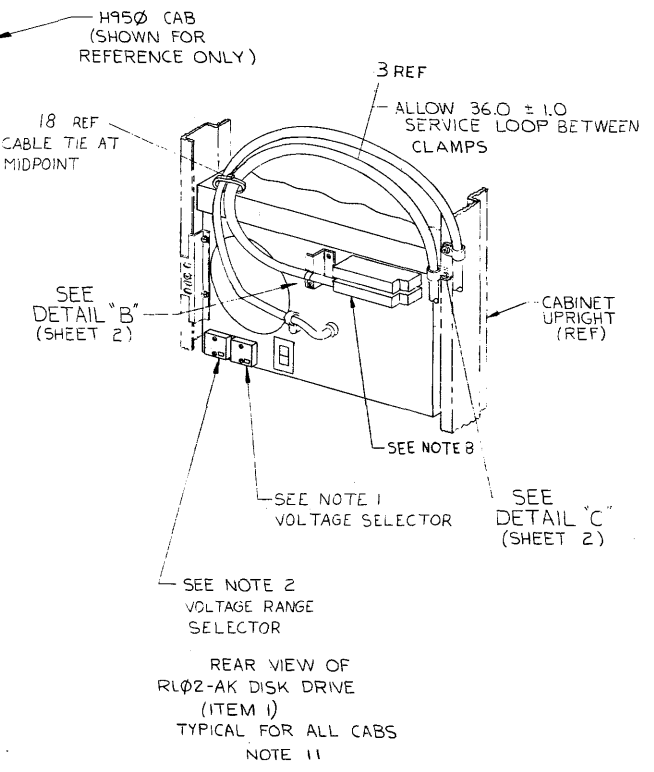
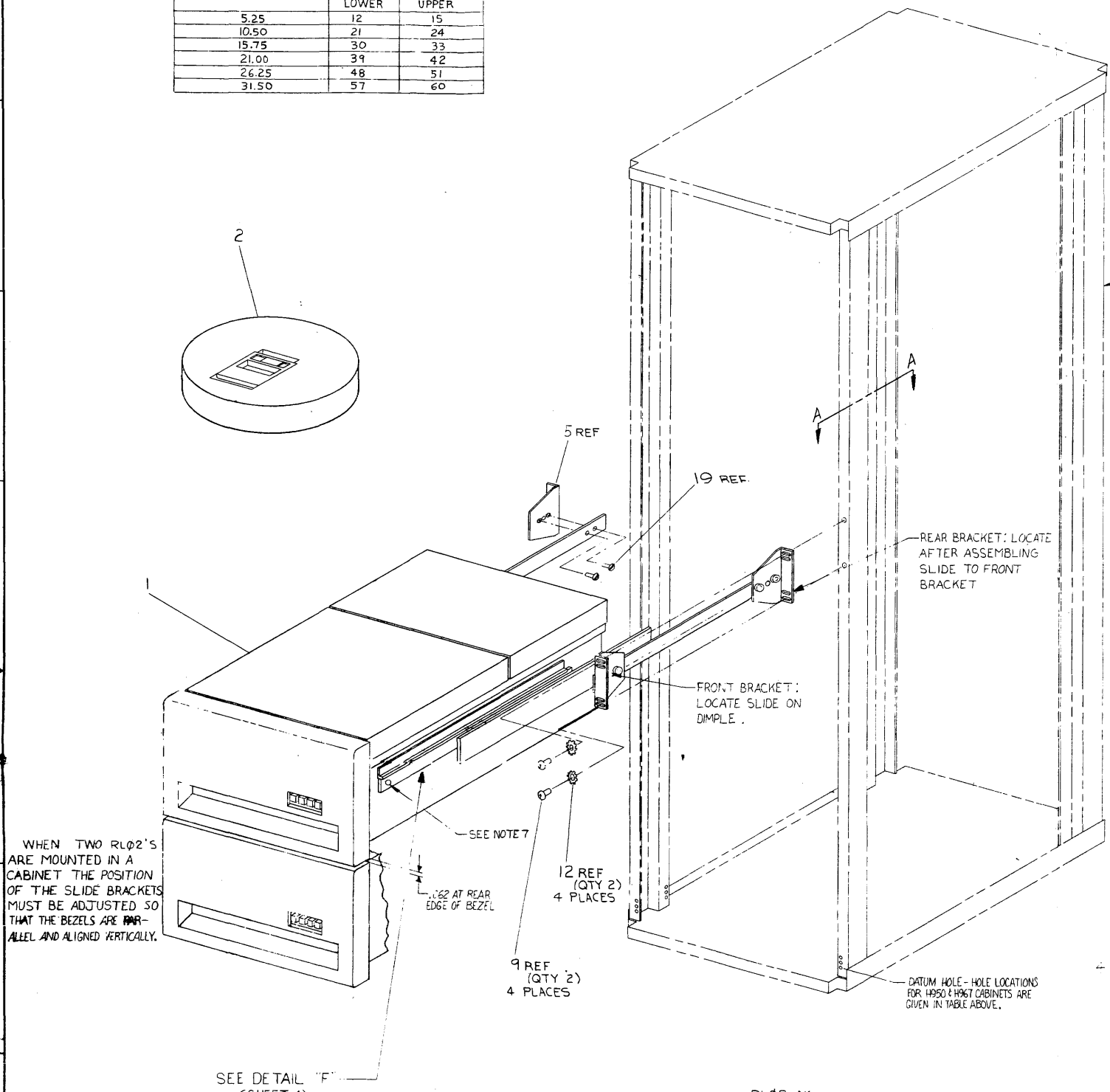




THIS DRAWING AND SPECIFICATIONS, HEREIN, ARE THE PROPERTY OF DIGITAL EQUIPMENT CORPORATION AND SHALL NOT BE REPRODUCED OR COPIED IN WHOLE OR IN PART AS TO THE DESIGN OR THE MANUFACTURE OR SALE OF ITEMS HEREIN WITHOUT PERMISSION. COPYRIGHT © 1978 DIGITAL EQUIPMENT CORPORATION

HOLE LOCATIONS FOR MOUNTING IN H950 AND H967 CABINETS

AVAILABLE SPACE (DEPTH) RLØ2	MOUNTING HOLES (FROM DATUM HOLE)	
	LOWER	UPPER
5.25	12	15
10.50	21	24
15.75	30	33
21.00	39	42
26.25	48	51
31.50	57	60



SECTION A-A  
(SHOWING TYPICAL MOUNTING OF CHASSIS SLIDES TO CABINET UPRIGHTS)  
SCALE: NONE

7.CONT  
D. SECURE DRIVE TO SLIDES USING SCREWS SUPPLIED. (SEE DETAIL "F", SHEET 4)  
TO REMOVE DRIVE, EXTEND SLIDES FULLY, REMOVE SCREWS, RELEASE LATCHES AND LIFT OFF.

8. FOR THE LAST DRIVE IN A SYSTEM, I/O CABLE PLUGS INTO EITHER SOCKET. TERMINATOR (SUPPLIED WITH CONTROLLER) PLUGS INTO THE OTHER.  
NOTES CONT. ON SH. 2

NOTES:  
1. MACHINES ARE SHIPPED CONFIGURED FOR 110 V, AND NOMINAL VOLTAGE RANGE. FOR 220 V OPERATION REMOVE TWO SCREWS FROM "VOLTAGE SELECTOR" COVER WITHDRAW THE COVER, AND REINSERT TURNED UPSIDE DOWN. AFTER INSERTION, 220 MUST BE SHOWING THRU THE SMALL WINDOW. REPLACE THE TWO SCREWS, CUT OFF 110V PLUG ON THE POWER CORD, REPLACE BY 220 V PLUG (ITEM #20). FOR COLOR CODE SEE DETAIL "G", SHEET 4.

- "LOW LINE" AND "NOMINAL LINE" ARE DEFINED ON COVER OF "VOLTAGE RANGE SELECTOR" FOR LOW LINE VOLTAGE OPERATION REMOVE TWO SCREWS FROM "VOLTAGE RANGE SELECTOR" COVER, WITHDRAW THE COVER AND RE-INSERT IT TURNED UPSIDE DOWN. AFTER INSERTION, "LOW" MUST BE SHOWING THRU THE SMALL WINDOW. REPLACE THE TWO SCREWS.
- WHEN AN RLØ2-AK IS ORDERED IN CONJUNCTION WITH H9500, H9501, H9502, H9503, H9600, H9601, H9602, H9603 INTERLOCK KIT(S) (REF 21) OR CABLE RESTRAINT SYSTEM(S) (REF 22) MUST BE ORDERED AND INSTALLED.
- WHEN AN RLØ2-AK IS ORDERED IN CONJUNCTION WITH A H9503/H9603 THE TRIM PIECES (H9514-B) MUST BE ORDERED.
- WHEN AN RLØ2-AK IS ORDERED IN CONJUNCTION WITH A H9501/H9601 TRIM PIECES (H9514-A) MUST BE ORDERED.
- TO ATTACH SHIPPING BRACKET (ITEM 7) REMOVE TWO SCREWS AND TWO LOCKWASHERS FROM ONE SIDE OF THE POWER PANEL ON THE REAR OF DISK DRIVE (ITEM 1), POSITION A SHIPPING BRACKET TO DETERMINE LOCATION OF "U" NUT (ITEM 13) AND ATTACH BRACKET USING ORIGINAL SCREWS AND LOCKWASHERS AND ITEMS 12 AND 9 (AS SHOWN IN DETAIL "D") BRACKET MAY BE ATTACHED TO EITHER SIDE OF UNIT.
- TO MOUNT RLØ2 IN CABINET:  
A. MOUNT BRACKETS AND SLIDES TO UPRIGHTS.  
B. EXTEND SLIDES AS FAR AS POSSIBLE BY RELEASING CATCHES. (SEE DETAIL "F" SHT 4)  
C. PLACE DRIVE ON SLIDES AND PUSH BACK UNTIL ENDS OF RAILS FIT UNDER TAB ON SLIDES AND LATCHES ENGAGE.

CAUTION: OFF SHEET PARTS LIST EXISTS.  
SEE K-PL-RLØ2-AK-DBP (Z0848).

REV	DESCRIPTION	DATE	BY	CHKD
1	INITIAL REV			
2	CHANGE NO. 1 TO REV 1			
3	CHANGE NO. 2 TO REV 1			
4	CHANGE NO. 3 TO REV 1			
5	CHANGE NO. 4 TO REV 1			
6	CHANGE NO. 5 TO REV 1			
7	CHANGE NO. 6 TO REV 1			
8	CHANGE NO. 7 TO REV 1			

DESCRIPTION	DWG. PART NO.	ITEM NO.
UNLESS OTHERWISE SPECIFIED DIMENSIONS ARE IN INCHES		
ANGLES 10° 30'	CLASS OF ACCURACY	NOMINAL DIMENSION RANGE
SURFACE QUALITY	CHECK ONE	INCHES
QUANTITY & VARIATION	PREFERRED	
THIRD ANGLE PROJECTION	DRN. <i>[Signature]</i>	FIRST USED ON
REMOVE BURRS AND BREAK SHARP CORNERS	CHKD. <i>[Signature]</i>	RLØ2 <i>[Signature]</i>
DO NOT SCALE DWG	ENG. <i>[Signature]</i>	TITLE
MATERIAL SEE PARTS LIST	PROJ. ENG. <i>[Signature]</i>	DISK DRIVE MTG. KIT & CARTRIDGE
FINISH	PROD. <i>[Signature]</i>	NUMBER
	NEXT HIGHER ASSY.	E UA RLØ2-AK-Ø
	MATERIAL	SCALE
	B-DD-RLØ2-AK	OF 4
	SEE PARTS LIST	DIST.

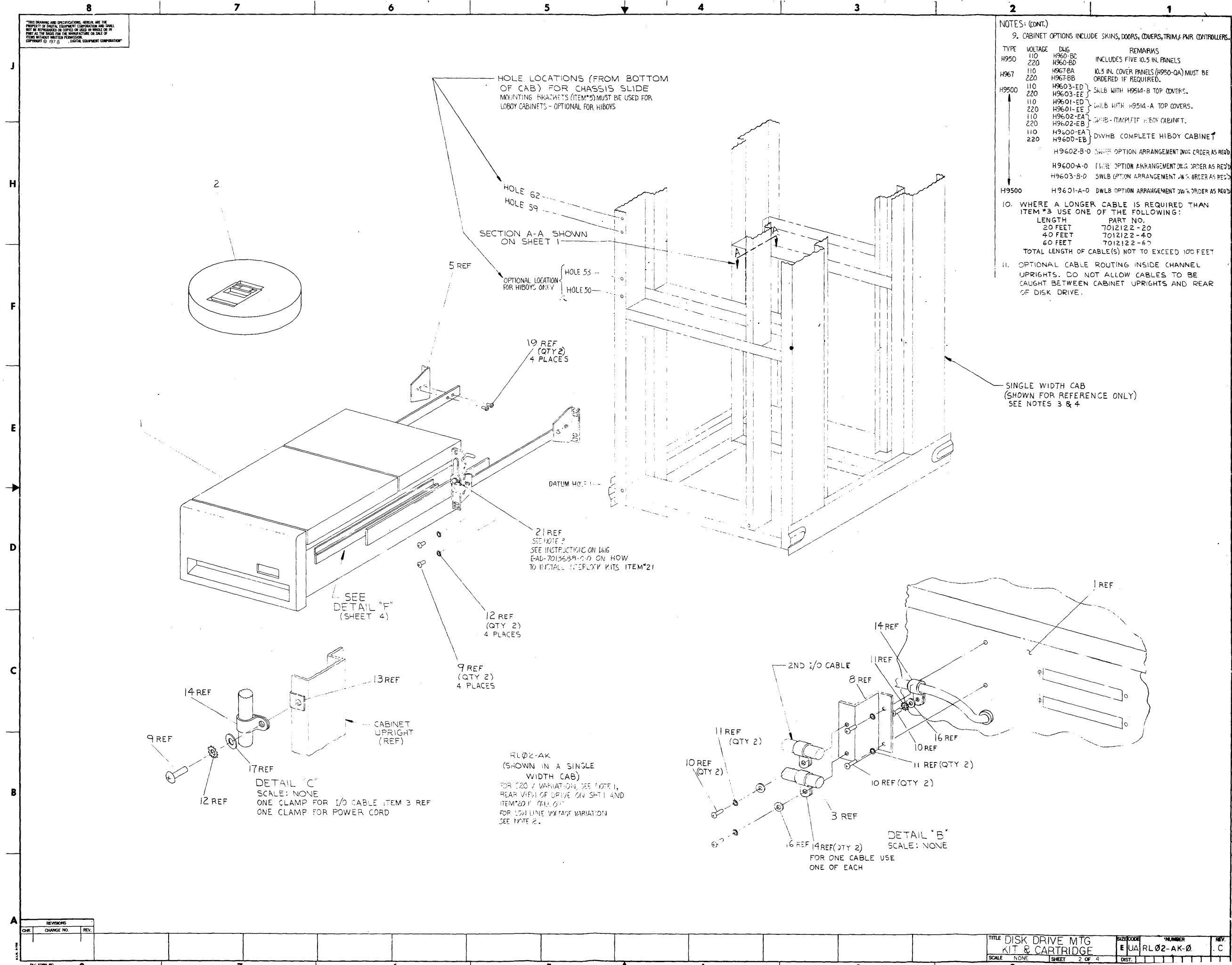
THIS DRAWING AND SPECIFICATIONS, HEREIN ARE THE PROPERTY OF DIGITAL EQUIPMENT CORPORATION AND SHALL NOT BE REPRODUCED OR COPIED OR USED IN WHOLE OR IN PART AS THE BASIS FOR THE MANUFACTURE OR SALE OF ITEMS WITHOUT WRITTEN PERMISSION. COPYRIGHT © 1978, "DIGITAL EQUIPMENT CORPORATION"

NOTES: (CONT.)

9. CABINET OPTIONS INCLUDE SKINS, DOORS, COVERS, TRIM, & PWR. CONTROLLERS.

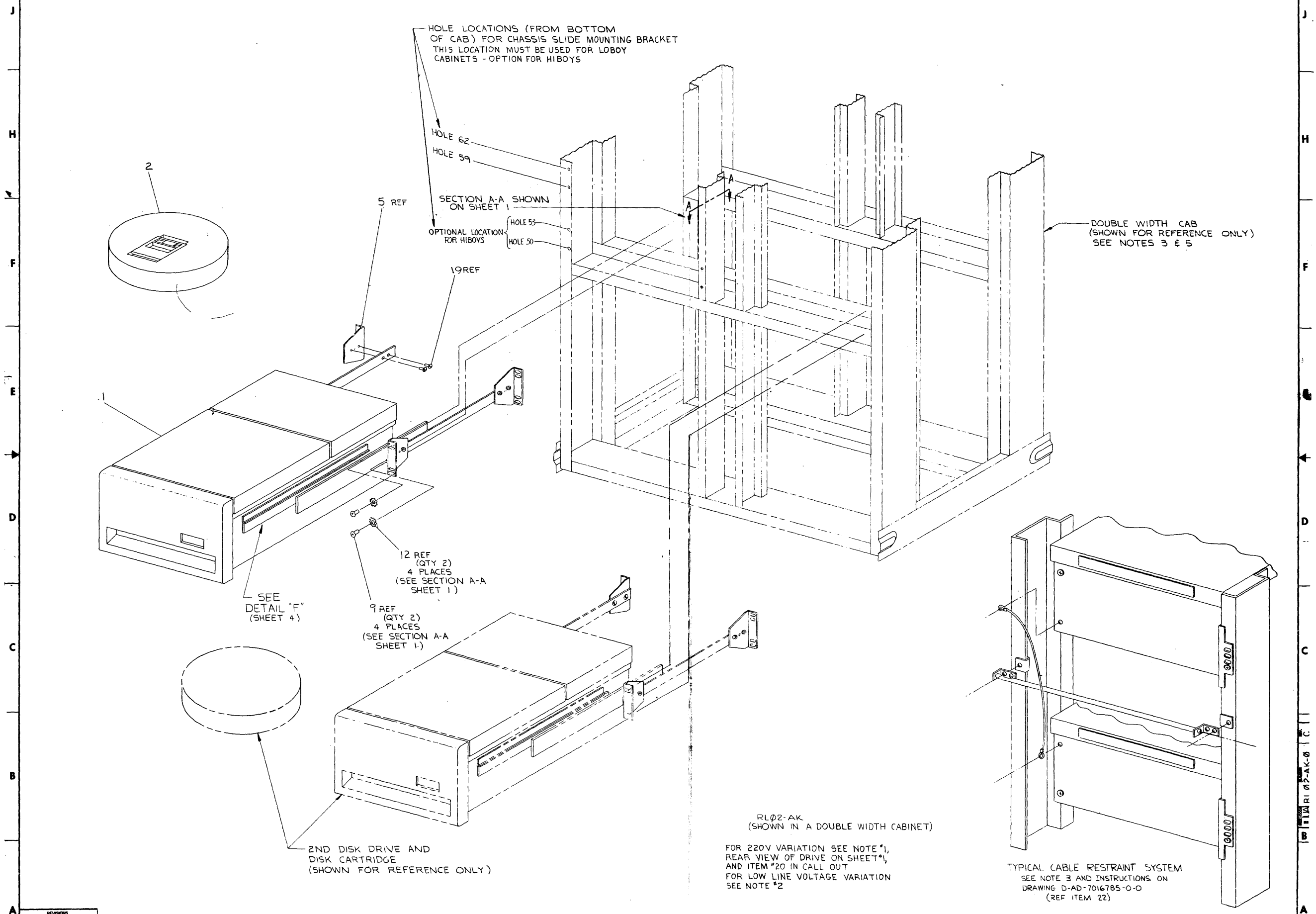
TYPE	VOLTAGE	DWG	REMARKS
H950	110	H960-BC	INCLUDES FIVE 10.5 IN. PANELS
	220	H960-BD	
H967	110	H967-BA	10.5 IN. COVER PANELS (H950-QA) MUST BE ORDERED IF REQUIRED.
	220	H967-BB	
H9500	110	H9603-ED	SWLB WITH H9514-B TOP COVERS.
	220	H9603-EE	
	110	H9601-ED	DWLB WITH H9514-A TOP COVERS.
	220	H9601-EE	
	110	H9602-EA	DWLB - COMPLETE HI-BOY CABINET.
	220	H9602-EB	
	110	H9600-EA	DWLB - COMPLETE HI-BOY CABINET
	220	H9600-EB	
		H9602-B-D	SWLB OPTION ARRANGEMENT DWG. ORDER AS REQ'D
		H9600-A-D	THRE OPTION ARRANGEMENT DWG. ORDER AS REQ'D
		H9603-B-D	SWLB OPTION ARRANGEMENT DWG. ORDER AS REQ'D
H9500		H9601-A-D	DWLB OPTION ARRANGEMENT DWG. ORDER AS REQ'D

10. WHERE A LONGER CABLE IS REQUIRED THAN ITEM #3 USE ONE OF THE FOLLOWING:
- | LENGTH  | PART NO.  |
|---------|-----------|
| 20 FEET | 701212-20 |
| 40 FEET | 701212-40 |
| 60 FEET | 701212-60 |
- TOTAL LENGTH OF CABLE(S) NOT TO EXCEED 100 FEET
11. OPTIONAL CABLE ROUTING INSIDE CHANNEL UPRIGHTS. DO NOT ALLOW CABLES TO BE CAUGHT BETWEEN CABINET UPRIGHTS AND REAR OF DISK DRIVE.



REVISIONS		
CHK	CHANGE NO.	REV.

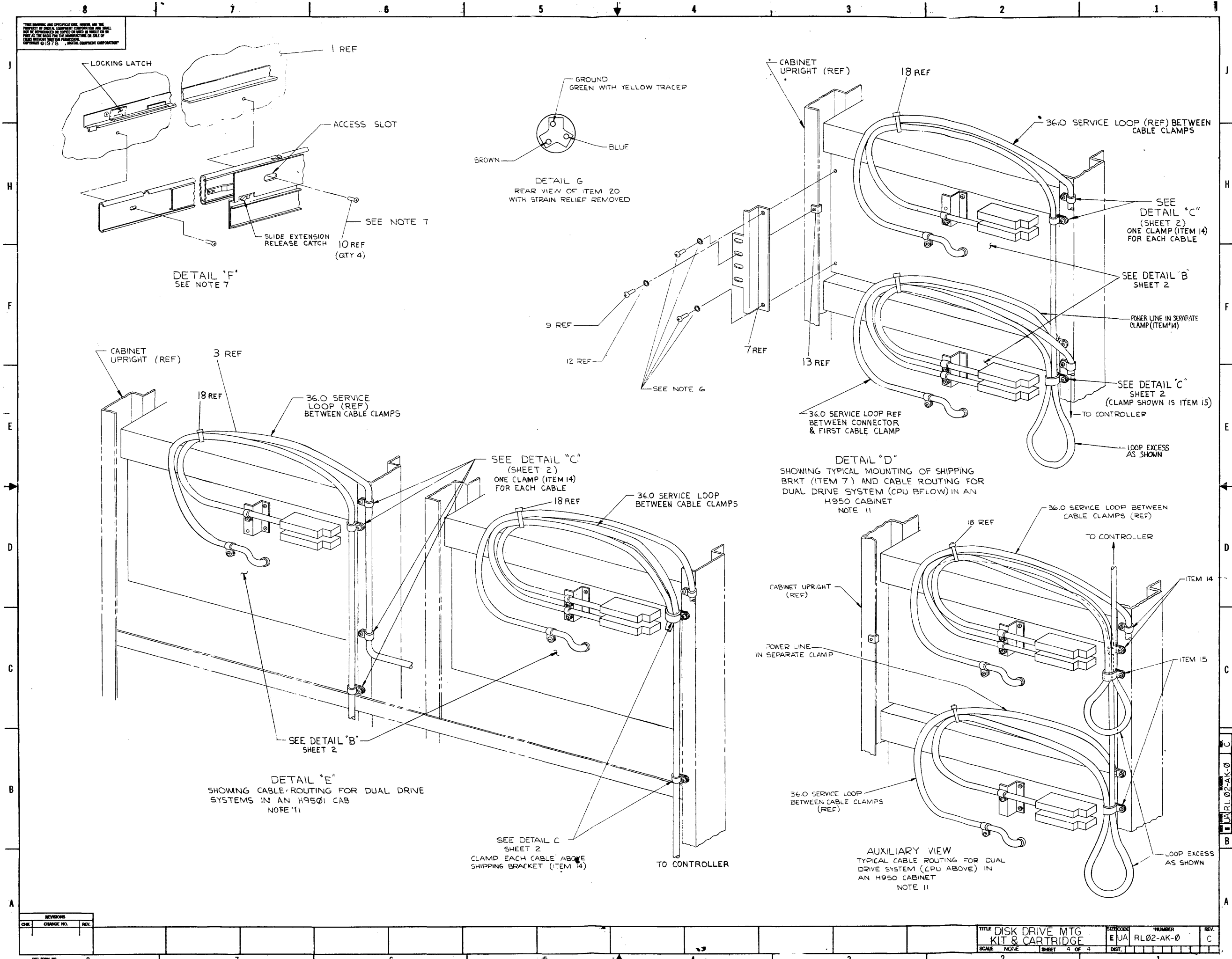
THIS DRAWING AND SPECIFICATIONS, HEREIN, ARE THE PROPERTY OF BUSH BROS. COMPANY. NO PART OF THIS DRAWING OR SPECIFICATIONS OR ANY OF THE INFORMATION CONTAINED HEREIN SHALL BE REPRODUCED OR COPIED IN WHOLE OR IN PART IN ANY MANNER FOR THE DISSEMINATION OR SALE OF THIS DRAWING WITHOUT PERMISSION. COPYRIGHT © 1975 BUSH BROS. COMPANY



REVISIONS		
CHK	CHANGE NO.	REV.

TITLE DISK DRIVE MTG KIT & CARTRIDGE		SIZE CODE E UA	NUMBER RL02-AK-0	REV. C
SCALE NONE	SHEET 3 OF 4	DIST.	1	

THESE DRAWINGS AND SPECIFICATIONS HEREBY ARE THE PROPERTY OF DIGITAL EQUIPMENT CORPORATION AND SHALL NOT BE REPRODUCED OR COPIED IN WHOLE OR IN PART AS THE BASIS FOR THE MANUFACTURE OR SALE OF ITEMS WITHOUT WRITTEN PERMISSION. COPYRIGHT © 1975, DIGITAL EQUIPMENT CORPORATION



REVISIONS		
CHK	CHANGE NO.	REV.

RL02-AK-0

